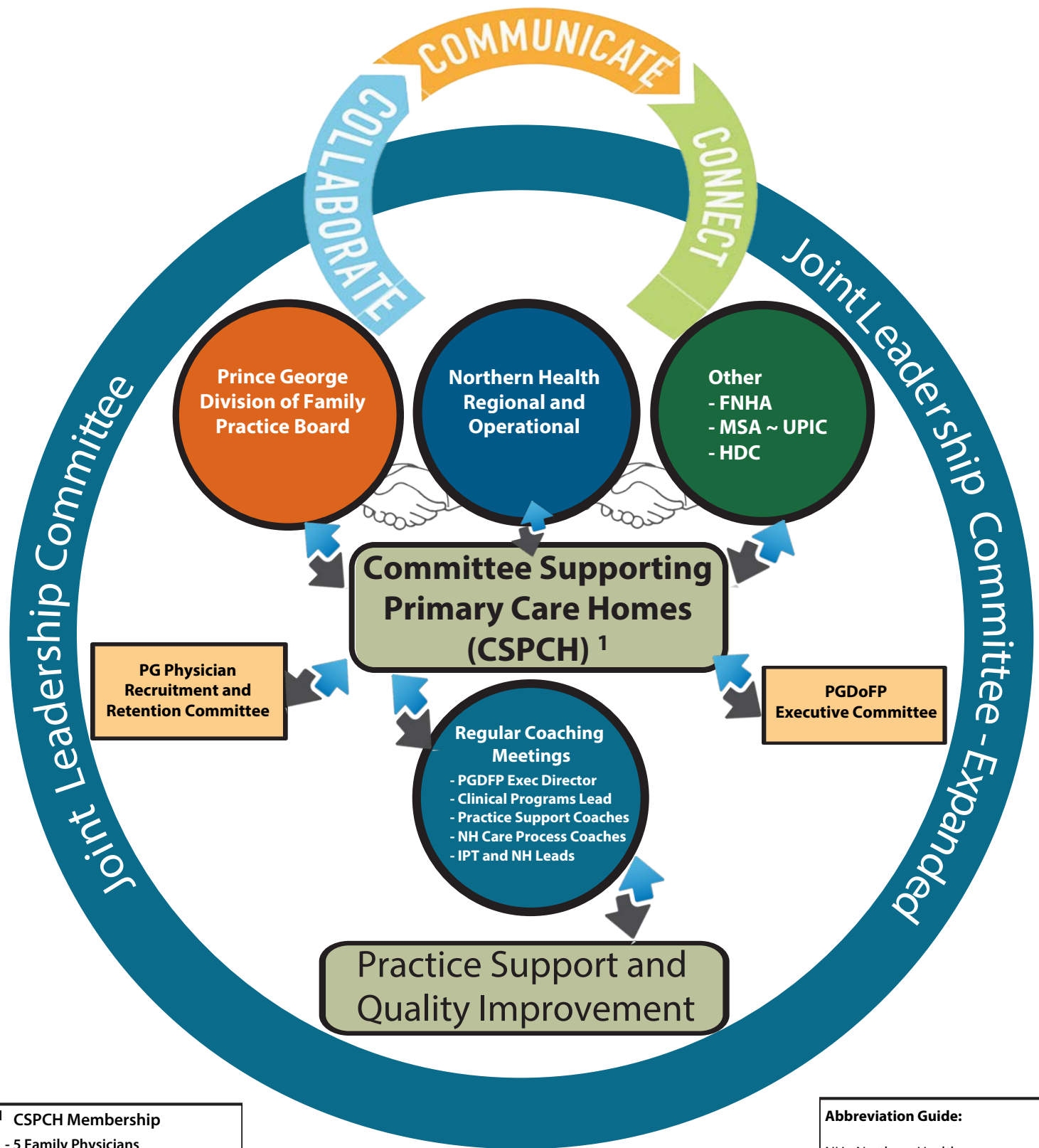


Prince George Partnerships in Action for Health



*1 CSPCH Membership

- 5 Family Physicians
- 2 NH PG Operations
- 1 NH Exec Lead Primary Care
- 1 NH Physician Lead Primary Care
- 1 HDC Rep
- 1 Pharmacy Rep
- 3 Practice Coaches
- 2 Division Admin Leads
- 1 EMR Vendor Rep

Abbreviation Guide:

NH - Northern Health
 PGDoFP - Prince George Division of Family Practice
 FNHA - First Nations Health Authority
 MSA - Medical Staff Association
 UPIC - University Hospital of Northern BC Physician Initiatives Committee
 HDC - Health Data Collaborative